

DNAKE



User Manual

DNAKE 607-B

REMARK

Please follow the user manual for correct installation and testing. If there is any doubt please call our tech-supporting and customer center.

Our company applies ourselves to reformation and innovation of our products. No extra notice for any change.

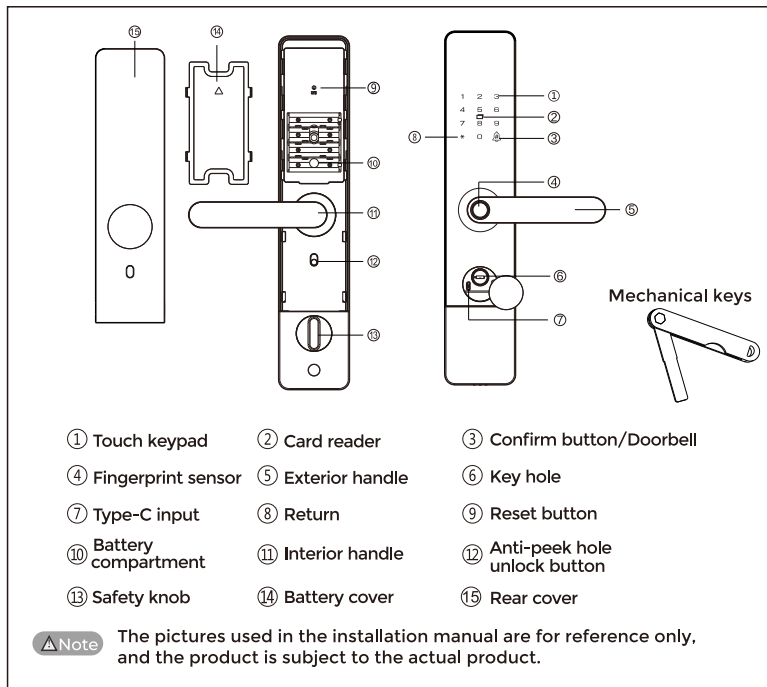
The illustration shown here is only for reference. If there is any difference, please take the actual product as the standard. The product and batteries must be handled separately from household waste. When the product reaches the end of service life and needs to be discarded, please contact the local administrative department and put it in the designated collection points in order to avoid the damage to the environment and human health caused by any disposal. We encourage recycling and reusing the material resources.

CATALOG

Product Picture And List	1
Product Introduction.....	3
User ID Description.....	4
Management Settings	5
How To Use.....	8
Net Pairing	10
Installation Steps.....	11

PRODUCT PICTURE AND LIST

1.1 Product Picture

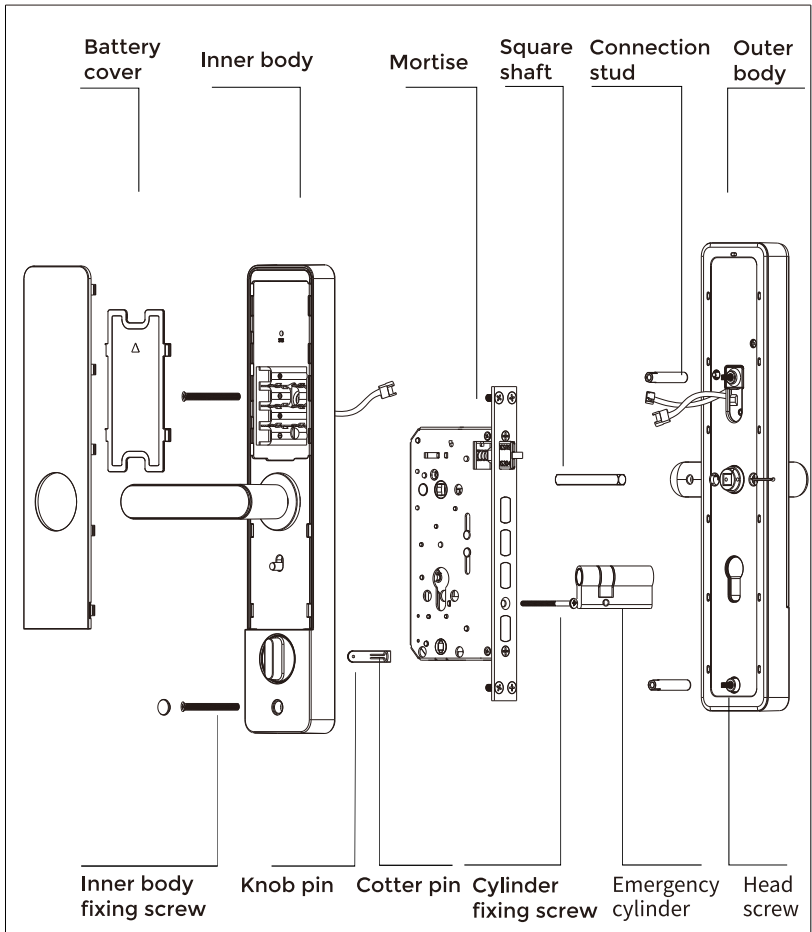


1.2 Product List

After unpacking, please check carefully according to the list, if you find any omissions, please ask us for it in time.

Ref	Name	Quantity
1	Outer body(Rubber pad included)	1
2	Inner body(Rubber pad included)	1
3	Key	2
4	Card	2
5	Accessory Kits	1
6	Manual	1

1.3 Product Exploded view



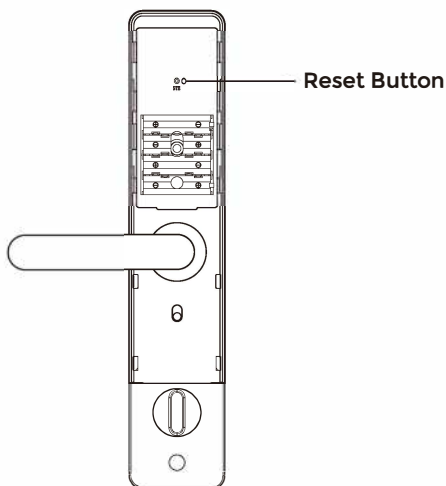
- | | | |
|-------------------------------|------------------------|----------------|
| 1. Battery cover | 2. Inner body | 3. Mortise |
| 4. Square shaft | 5. Connection stud X2 | 6. Outerbody |
| 7. Inner body fixing screw X2 | 8. Cotter pin X2 | 9. Knob pin |
| 10. Cylinder fixing screw | 11. Emergency cylinder | 12. Head screw |

PRODUCT INTRODUCTION

Fingerprint	Using semiconductor fingerprint sensor with a capacity of 50 fingerprints;
Password and proximity card	Password + proximity card capacity: 250 groups, password length 6-10bits,with virtual bits password function (enter up to 20 digits consecutively), as long as you have the correct password can pass verification, input more than 20 digits at a time will not be recognized.
Navigation	Full voice prompt navigation;
Key	2 pcs mechanical keys;
Power supply	Powered by 4 AA batteries (not included), with an external power interface (Type-C interface);
Administrator	Password,fingerprint or proximity card can be freely selected,minimum 1 administrator, maximum 9 administrators.(Any administrator can be deleted, but at least one administrator must be retained).
Other-functions	Anti-pry-alarm, trial and-error-alarm, low-battery alarm;
Factory state	No user in factory state, please register administrator or user in the factory state;
Initialization settings	Press and hold the reset button behind the door for 5 seconds, according to the prompt "Restore the factory state, press # to confirm, press *to exit" .Press # to confirm, wait a few seconds to receive "initialization success"prompt.

USER ID DESCRIPTION

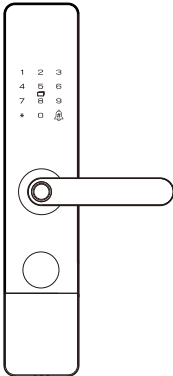
Other Settings	Operations in Factory Reset State: Enter "100#" for Chinese Enter "101#" for English Enter "104#" for Russian Enter "106#" for Arabic Enter "113#" for Kazakh or "114#" for Turkish Enter "21770#" to enable/disable the anti-pry alarm function
Management Setting	Enter "**#" to access the system main menu/verify the administrator
User Attributes	Administrator: fingerprint, password, proximity card; User: fingerprint, password, proximity card.
User Number Relationship	A number can only register one type of user. For example, if you register fingerprint No.8, you cannot register password No.8.The number is automatically assigned incrementally.
Number Range	001-300



After restoring the factory state,all user registration information will be cleared.

MANAGEMENT SETTINGS

4.1 How To Enter The Management Settings Mode



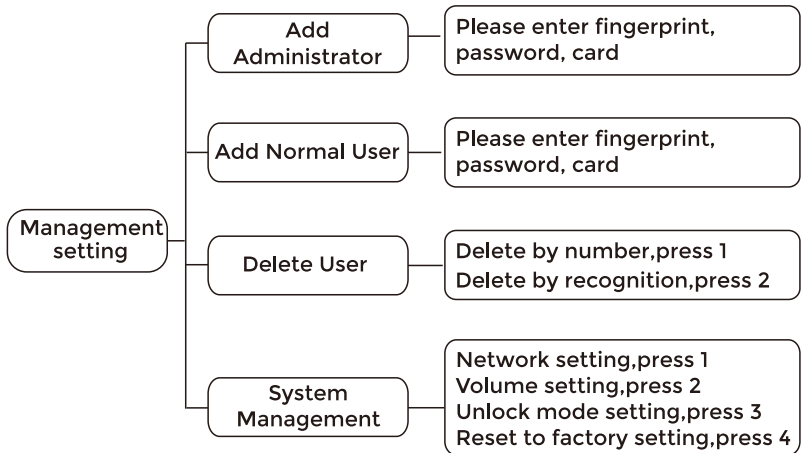
4.1.1 Touch keypad to wake up the product, press the "*"#"# in turn or short press the reset button behind the door once to enter the management settings.

4.1.2 In the initialization state, it will auto matically enter the administrator password (number is fixed to 001) registration menu. For the registration process, please refer to the fingerprint, password or proximity card registration process. If the administrator has already been registered,it will prompt "please authorize".



If the identification of the administrator fails,the voice plays"input error". If the recognition is successful,it will enter the main menu directly.Press * to exit, and press the corresponding number to enter the sub-menu.

4.2 Management Settings Menu



Above operations are voice prompted.

4.3 Add Administrator

After accessing the management setting menu, enter "1" on the keypad to navigate to the "Add Administrator". On this option, you can add an administrator's fingerprint, password, or card information.



Note

With seasonal environmental changes, there will be deviations in the clarity of fingerprint feature points, resulting in changes in recognition rate. When the recognition rate decreases, customer shall re-enter the corresponding finger.

4.4 Add Normal User

After accessing the management setting menu, enter "2" on the keypad to navigate to the "Add Normal User".

In the "Add Normal User" option, you can add normal users' fingerprints, passwords, or card information.

When adding a user's fingerprint, the default number of fingerprint registrations is 5. For adding a user password, the password must be 6-10 digits (each digit can be 0-9), and press the "#" key to confirm. When adding a user password, the password needs to be entered twice, and only when the two entries match can the password be successfully added. For adding a card user, simply place the card in the card recognition area of the keypad to complete the card registration.

4.5 Delete User

After accessing the management setting menu, enter "3" on the keypad to navigate to the "Delete User".

Enter "1" on the keypad to navigate to the number-based deletion page, where you can enter the number corresponding to an administrator or normal user to delete the user.

Enter "2" on the keypad to access the recognition-based deletion function. Enter the corresponding fingerprint, password, or card; once recognition is successful, the user will be deleted.

4.6 System Management

After accessing the management setting menu, enter "4" on the keypad to navigate to the "System Management".

Enter "1" on the keypad to navigate to the network settings page.

Enter "2" on the keypad to navigate to the volume settings page. Enter 1 to 4 on the keypad to switch the system language volume.

Enter "3" on the keypad to access the unlock mode menu.

Enter "1" to set it to Single Unlock Mode (Single unlock means only one type of unlock information—fingerprint, password, or card—needs to be entered to unlock the device).

Enter "2" to set it to Combination Unlock Mode (Combination unlock requires two different types of unlock information to unlock the device, i.e., fingerprint + password, fingerprint + card, or card + password).

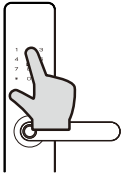
Enter "4" on the keypad to access the administrator verification page. Once the administrator verification is successful, the "*" keys will light up.

Press the "#" key to confirm and restore the system to factory settings. Press the "*" key to return to the previous page.

How TO USE

5.1 In Common Mode

5.1.1 Password Unlock



a. Enter the added password, press # to confirm, password verification is successful and voice prompt "lock opened".

b. Press down the handle to unlock.



Note

You can add any dummy password before or after the user password, and the length including the dummy password should not exceed 20 digits, which completely eliminates the risk of password leakage.

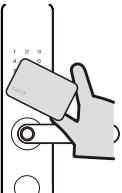
5.1.2 Fingerprint Unlock



a. The added fingerprint has been placed on the fingerprint sensor in the correct way, the fingerprint verification success and voice prompt "lock opened".

b. Press down the handle to unlock.

5.1.3 Swipe To Unlock



a. Put the added proximity card close to or paste it on the keypad area, and the proximity card verification is successful and the voice prompt "lock opened".

b. Press down the handle to unlock.

5.2 Emergency Unlocking

5.2.1 Mechanical Key Unlock

In case of emergency, such as forgetting the password, running out of battery power or system inoperability, a spare mechanical key can be used.



a. Rotate the outer body keyhole cover to see the keyhole.

b. Insert the key into keyhole.

c. Turn the key and press down handle to unlock.

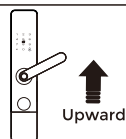
5.2.2 USE Emergency Power Supply

when the battery is exhausted and there is no key, you can connect an external power bank or 5V1A power supply for emergency, and open the door according to the normal operation steps. Please replace the battery in time after the emergency unlock.

Note Do not mix different models, new and old batteries.

5.3 Door Lock

5.3.1 Outside Lock



Up-lifting the handle to lock the door from outside.

5.3.2 Inside Lock



Inner body anti-peep hole unlock button.

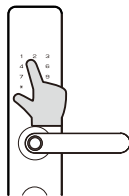
5.3.3 Door Inside Safety Knob



Rotate the safety knob to lock position

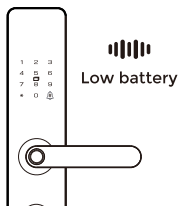
Turn the button to enable and disable the function and prevent kids or pet unlock the door by accident. At this time, it cannot be opened normally from the outside and needs to be unlocked from door inside.

5.4 Trail Freeze Function



When the number of errors of fingerprints, passwords, and cards within 5 minutes is ≥ 3 consecutively, an audible and visual alarm will be issued; when the number of errors within 5 minutes is ≥ 5 , the system freezes for 95 seconds, and fingerprints, passwords, and cards can no longer be identified within 95 seconds.

5.5 Battery Level Detection



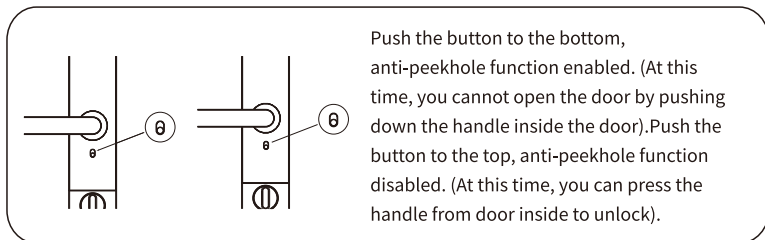
When the battery voltage is between 4.5 and 4.8v, it can be recognized normally, and a voice prompt will be made every time before unlocking: "Low battery, please replace".

When the battery is below 4.5V, the horn will beep five times each time the touch keypad is woken up, and the lock will not be unlocked.



This product can be equipped with AA batteries, and 4 batteries can be used normally.

5.6 Anti-peek Hole Unlock Button



NET PAIRING

1. Please search and download the "DNAKE SMART LIFE" APP from APP store.
2. Press "**#" on the lock to enter "Management Setting" with administrator authorization.
3. Following the voice navigation, press "4" and then press "1" to enter net pairing and continue to press "1" for network connection.
4. Ensure that the bluetooth on your mobile phone is enabled, and make sure your phone and the smart lock are connected to the same WiFi (2.4G) during the network pairing.
5. Select to add a device, enter WiFi (2.4G) information and wait for a while until the device is discovered.
6. An alternative addition method is also available: "Add Device" and select "Camera & Lock" "Lock(WiFi)", enter WiFi name and password. Press "Next" to enable net pairing between locks and the APP.

INSTALLATION STEPS

Parts List



Square Shaft
140MM



Connecting Stub
40MM



Cotter Pin



Reversing Screw



Bamboo Screw
95MM



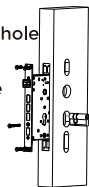
Knob Plate



Cylinder

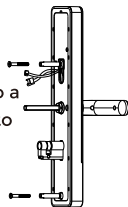
1. Install Mortise

- Place the mortise into the hole and fix it properly.
- Insert the cylinder into the mortise (note the front and back) and fix it with screws.



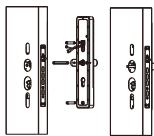
2. Cutting Positioning Column And Other Accessories

- Tighten the two connecting bolts on the outer headless studs, cut the square shaft to a suitable length, and put it into the square hole of the outer body to fix it with a split pin.



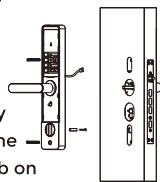
3. Install And Fix Outer Body

- Pass the outer body cable through the uppermost cable hole.
- Pass the square shaft on the outer body through the square hole of the mortise, and the inner panel is close to the outside of the door.



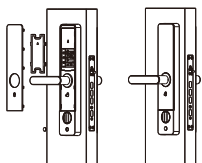
4. Install Inner Body

- Connect the inner body connecting line segment with the outer body segment.
- Cut the knob pin to a length shorter than the thickness of the door by 5-10mm, insert it into the notch of the safety knob on the inner body, and fix it with a split pin.



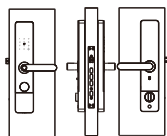
5. Fix Inner Body

- Place the inner body close to the inside of the door and fix it with two bamboo screws.



6. Test Smart Lock

- Install the battery and the battery cover on the inner body.
- Operate the internal and external handles, safety knobs and mechanical keys to check whether the connecting parts are working well.



 **EASY & SMART
HOME SOLUTIONS**