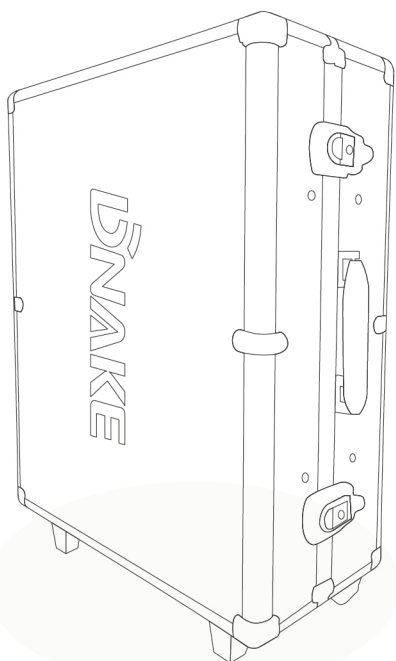


## DEMO CASE

To present DNAKE products for maximum visual appeal and help to achieve the desired positive effect on potential buyers, DNAKE offers demo cases to all our distributors. DNAKE demo case can be used to demonstrate intercom products and solutions in various scenarios.



## PHYSICAL PARAMETERS OF DEMO CASE



Dimensions (W x H x D):  
525\*420\*190mm

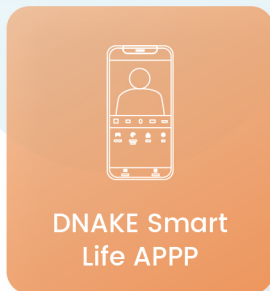


Power Supply:  
110~250V AC



Ethernet:  
1 x 10/100 Mbps RJ45

# LIST OF DEMO CASE



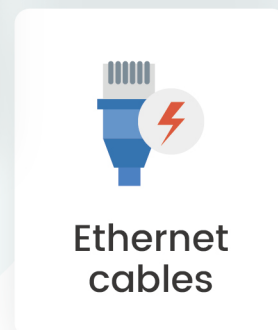
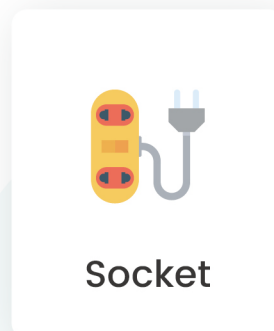
## Products

All the products can be chosen and matched arbitrarily based on your needs. Our experts can advise on products and solutions.

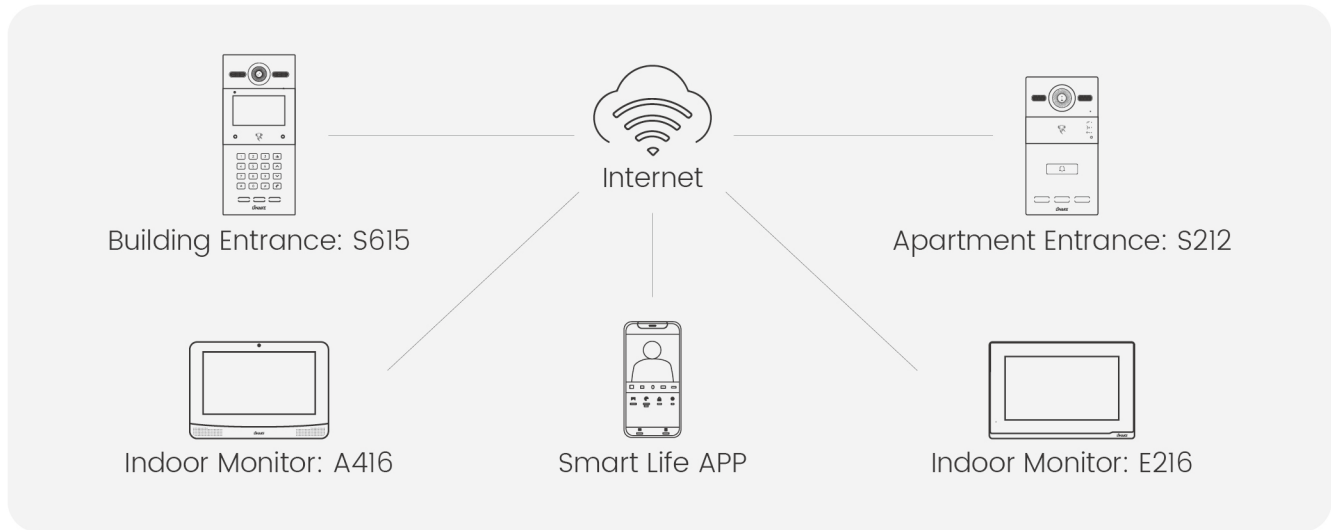
One trial account for DNAKE Smart Life APP will be offered for free.

## Accessories

All the demo cases will be pre-wired and pre-configured for easy use. It includes three accessories.



# TOPOLOGY



## FEATURES & HIGHLIGHTS



### Flexible Authentications

- Support cards, NFR, PIN codes, facial recognition, and DNAKE Smart Life App.
- Enjoy intelligent and touch-free access.



### Mobile Control

- Live view on mobile phone 24x7.
- Receive calls, talk to visitors, and unlock doors remotely from anywhere.



### Feature-rich Indoor Monitor

- Link with alarm sensors.
- Real-time monitor IPCs.
- Preview the door station video before answering the call.

## WHY DO YOU NEED ONE?



### Portable

Easy and convenient to carry.



### Timesaving

Pre-wired and pre-configured for plug and play.

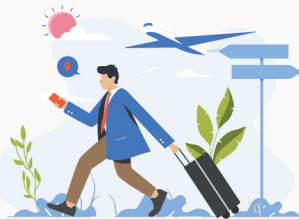


### Visual Appeal

All-around products demonstration.

## YOU CAN TAKE IT TO

### Business Visit



### Internal Trainings



### In-person Events

